

Phenotypic and Genotypic Characterization of *Escherichia coli* Isolates Recovered from Equines with Respiratory Problems in Egypt

Amany A Arafa ^{1*}, Khaled A Abd El-Razik ², Mai M Kandil ¹ and Abeer M Abdalhamed ³

¹Department of Microbiology and Immunology, Veterinary Research Institute, National Research Centre, Dokki, Egypt

²Department of Animal Reproduction, Veterinary Research Institute, National Research Centre, Dokki, Egypt

³Department of Parasitology and Animal Diseases, Veterinary Research Institute, National Research Centre, Dokki, Egypt

*Corresponding author: dr.amanyahmed@yahoo.com

Article History: 24-584 Received: 12-Aug-24 Revised: 15-Oct-24 Accepted: 19-Oct-24 Online First: 23-Oct-24

ABSTRACT

The gradual increase of antibiotic resistance of *E. coli* has become alarming to public health; moreover, isolates have virulence genes affecting the severity of infections. Sequencing virulence genes and studying their phylogenetic relations are effective for infection control. The current study aimed to determine the prevalence of *E. coli* isolates from horses suffering from respiratory manifestation and their antimicrobial resistance, virulence determinants, biofilm production, and phylogeny of these strains. Polymerase Chain Reaction (PCR) was used to detect virulent genes such as *eaeA*, *Iss*, *papC*, *astA*, *AdrA*, *iutA*, *Stx1*, and *Stx2*. Furthermore, isolates were screened for antibiotic-resistance genes such as *blaTEM* and *Sul1*. All identified *E. coli* strains were positive for the following virulence genes: *eaeA*, *Iss*, *papC*, *astA*, *iutA*, and *AdrA* with 100% incidence. Shiga toxin genes (*Stx1* and *Stx2*) were not revealed in all *E. coli* isolates examined. Furthermore, the examined bacterial isolates harbored the β -lactamase resistance gene (*blaTEM*) and sulphonamide resistance gene (*Sul1*). PCR products were sequenced, and four sets of DNA-sequences for *E. coli* isolates were produced and deposited in GenBank for *ast*, *iss*, *eae*, and *papC* gene. In the present study, virulent antibiotic-resistant strains of *E. coli* in equines threaten the public's health. Phylogenetic analysis of these genes exhibits an effective method for disease control.

Key words: *E. coli*, Virulence, Antibiotic resistance, Equine, Egypt

INTRODUCTION

Equine athletes are greatly affected by respiratory illnesses, which are frequently identified as the second most common reason for low performance and high veterinary expenses costs (Melo and Ferreira 2022; Melo et al. 2024). Horses frequently suffer from lower and upper respiratory system disorders, ranging from minor virus infections to major bacterial infections (Arafa et al. 2021; Melo and Ferreira 2022). Interest in the health of the lungs and heart of equines has increased recently (Stucchi et al. 2023). The most prevalent cause of pneumonia in adult horses is the aspiration of bacteria from the outside world, the nose, or the oropharynx, which overwhelms the body's defense mechanisms in the lower airways, as opposed to the case with neonates, where bacterial pneumonia frequently has a hematogenous etiology (Melo and Ferreira 2022). Among the bacteria that are frequently recovered from horses that have pleuropneumonia are *Streptococcus*

sp., *Streptococcus equi subsp. zooepidemicus*, *Klebsiella pneumoniae*, *Escherichia coli*, *Pasteurella sp.*, *Actinobacillus sp.* and *Enterobacter sp.* Anaerobic bacterial isolates include *Clostridium sp.*, *Bacteroides sp.*, *Peptostreptococcus sp.* and *Fusobacterium sp.* (Reuss and Giguere 2015; Arafa et al. 2021).

Choosing suitable antimicrobials is essential for treating these infections effectively and lowering the chance of multiple antibiotic-resistant *E. coli* strains emerging, which has been identified as the main source of infection globally (Weese et al. 2015; Reshadi et al. 2021). Additionally, according to Ramos et al. (2020), the existence of resistant genes in commensal *E. coli* may propagate resistance to pathogenic strains horizontally as well as to humans through fecal-oral contamination (Salinas et al. 2021).

Virulent strains of *E. coli* have been observed to have an impact on the infection severity. Numerous virulence factors, including those related to adhesion (*iha*, *afaB/C*,

fimH, *papC*, *papG2*, and *sfaD/E*), iron acquisition (*ironN*, *fyuA*, *iucD*, and *iutA*), capsule formation (*kpsMT2*), toxicity (*hlyA*, *sat*, *cnfI*, and *usp*) and miscellaneous genes (*ompT*, *tcpC*, *cvaC*, *ibeA*, and *traT*), have been demonstrated to be expressed by *E. coli* strains. These virulence factors are significant at every stage of the infection process (Flores-Mireles et al. 2015).

Phylogenetic research has revealed that *E. coli* is included in four major phylogenetic groups: A, B1, B2, and D. Group B2 and, somewhat less significantly, group D comprises the most virulent extra-intestinal *E. coli* strains, whereas the commensal *E. coli*, considered less virulent, belong to groups A or B1 (Clermont et al. 2000; Čurová et al. 2020; Riaz et al. 2023). Therefore, the current work aimed to determine the prevalence of *E. coli* to detect their resistance to antimicrobial agents, virulence determinants, biofilm production, and phylogeny of *E. coli* isolates from horses exhibiting respiratory manifestation. Therefore, this study aimed to evaluate the potential virulence of equine strains of *E. coli* in Egypt.

MATERIALS AND METHODS

Ethical approval

The Medical Research Ethics Committee-NRC approved the project (approval number 19153).

Study period and location

The study was carried out from 2021 to 2023. The research was done at the National Research Centre, and the samples were processed at the Microbiology and Immunology Department, Veterinary Research Institute, National Research Centre, Egypt.

Samples

A total of 108 nasal swabs were obtained from Giza Governorate, Egypt, and divided into three groups: native breed (68), foreign breed (36), and Arabic breed (4). Using sterile cotton swabs soaked with normal saline, nasal swabs were taken from the nasopharynx, which connects the nasal cavity to the oropharynx. All collected samples were immediately placed in an icebox in the laboratory after being thoroughly packaged, numbered, and dispatched.

Bacterial isolation and identification

Nasal swabs were immersed in modified tryptic soy broth (TSB, Oxoid, UK). For 24 hours, the specimens are incubated at 37°C. MacConkey agar plates (Oxoid, UK) are used to cultivate every sample (Feng et al. 2011). Following an 18-24 hour incubation period at 37°C, distinct colonies exhibiting characteristic *E. coli* morphology were identified and moved to EMB agar (Oxoid, UK) for additional purification. Subsequently, the potentially pathogenic *E. coli* isolates were cultivated on nutrient agar and subjected to biochemical analyses, including methyl red, oxidase, citrate, and triple sugar iron tests, according to Liu et al. (2017).

Serotyping of *E. coli* isolates

The examined isolates were serogrouped in Animal Health Research Institute, Giza, Egypt, via Sifin antisera

"Berlin, Germany" Polyvalent and monovalent diagnostic *E. coli* antisera. The serological typing based on agglutination reactions of their antigens was detected as described by Edwards and Ewing, 1972.

DNA extraction

According to the manufacturer's recommendations, the GF-1 Bacterial DNA Extraction Kit (Cat No. GF-BA-100, Vivantis Technologies, Malaysia) was used to extract DNA from bacterial cultures.

Molecular identification of *E. coli* Spp. virulence genes and antibiotic resistance genes using conventional Polymerase Chain Reaction (PCR)

All isolated *E. coli* strains were examined for the existence of the following virulence genes: *eaeA*, *Iss*, *papC*, *astA*, *AdrA*, *iutA*, *Stx1*, and *Stx2* genes; furthermore, all isolates were examined for the presence of the antibiotic resistance genes as *blaTEM* and *Sul1* genes. The used primers with the expected products are listed in Table 1.

PCR reaction was performed using SimpliAmp™ Thermal Cycler (Cat. No. A24811, Applied Biosystems, USA) in a total volume of 25µL reaction including 12.5µL of 2x MyTaq™ Red Mix Master Mix (Cat. BIO-25043, Meridian Bioscience, UK), 1µL (10µM) of each primer and 1µL of target DNA and 9.5µL of DDW. Electrophoresis on a 1.5% agarose gel was used to separate the PCR products, then photographed and analyzed by the InGenius3 gel documentation system (Syngene, UK). Table 2 lists the cycling conditions.

DNA sequencing and phylogenetic tree building

The GeneJET Gel Extraction Kit (K0691, Thermo Fisher, USA) was used to purify two of the positive PCR products targeting *ast*, *eae*, *Iss* and *papC* virulence genes of *E. coli* isolated from nasal swabs of horses. The sequences were then run by Macrogen Company (Korea). Two-way sequencing using the specific primers used in PCR served as a confirmation of the data's accuracy. BioEdit 7.0.4.1 and MUSCLE were used to examine the nucleotide sequences acquired in this work. Using a neighbor-joining technique of the aligned sequences implemented in the application CLC 6, the obtained sequences were aligned with reference sequences of virulence genes of *E. coli*. Four sets of DNA sequences for *E. coli* isolates were deposited in GenBank under the accession numbers PP236041-PP236046 for *ast* gene, PP196348-PP196353 for *iss* gene, PP196354-PP196359 for *eae* gene and PP196360-PP196365 for *papC* gene.

RESULTS

Isolation and identification of *E. coli*

Colonies of suspected *E. coli* on MacConkey agar appeared pink to dark pink, and colonies examined by Gram's stain showed Gram-negative bacilli when examined under a light microscope. All the biochemical tests were interpreted as methyl red positive, Voges-Proskauer negative, oxidase negative, citrate negative, urease negative, and acid produced with gas and without hydrogen sulfide formation on TSI were identified as *E. coli*. Out of 108, 68 isolates of *E. coli* were recovered with an incidence of 62.9%, which isolated from foreign and

Table 1: Primers used for detection of virulence and antibiotic resistance genes

Gene	Sequence (5'-3')	Amplicon size (bp)	References
<i>eaeA</i>	ATGCTTAGTGCTGGTTTAGG GCCTTCATCATTTCGCTTTC	248	Guion et al. (2008)
<i>Iss</i>	ATGTTATTTTTCTGCCGCTCTG CTATTGTGAGCAATATACCC	266	Tawfik et al. (2016)
<i>papC</i>	GTGGCAGTATGAGTAATGACCGTTA ATATCCTTTCTGCAGGGATGCAATA	200	López-Banda et al. (2014)
<i>astA</i>	CCATCAACACAG TATATCCGA GGTCGCGAGTGACGGCTTTGT	111	Yamamoto and Echeverria (1996)
<i>AdrA</i>	ATGTTCCCAAAAATAATGAA TCATGCCGCCACTTCGGTGC	1113	Bhowmick et al. (2011)
<i>iutA</i>	GGCTGGACATGGGAACTGG CGTCGGGAACGGGTAGAATCG	300	Yaguchi et al. (2007)
<i>Stx1</i>	ACACTGGATGATCTCAGTGG CTGAATCCCCCTCCATTATG	614	Dipineto et al. (2006)
<i>Stx2</i>	CCATGACAACGGACAGCAGTT CCTGTCAACTGAGCAGCACTTTG	779	Dipineto et al. (2006)
<i>blaTEM</i>	ATCAGCAATAAACCAGC CCCCGAAGAACGTTTTTC	516	Colom et al. (2003)
<i>Sul1</i>	CGGCGTGGGCTACCTGAACG GCCGATCGCGTGAAGTTCCG	433	Ibekwe et al. (2011)

Table 2: Cycling condition for screened genes

Gene	Initial Denaturation	Denaturation	Annealing	Extension	Final Extension	Cycles
<i>AdrA</i>	94°C/5min	94°C/30s	50°C/1min	72°C/1min	72°C/10min	35
<i>astA</i>	94°C/5min	94°C/30s	55°C/30s	72°C/45s	72°C/10min	35
<i>eaeA</i>	94°C/2min	94°C/20s	53°C/30s	72°C/45s	72°C/10min	35
<i>Iss</i>	94°C/5min	94°C/30s	54°C/30s	72°C/45s	72°C/10min	35
<i>iutA</i>	94°C/5min	94°C/30s	63°C/30s	72°C/30s	72°C/7min	35
<i>papC</i>	94°C/5min	94°C/30s	58°C/30s	72°C/45s	72°C/10min	35
<i>Stx1</i>	94°C/5min	94°C/30s	63°C/30s	72°C/45s	72°C/10min	35
<i>Stx2</i>	94°C/5min	94°C/30s	63°C/30s	72°C/45s	72°C/10min	35
<i>Sul1</i>	94°C/5min	94°C/30s	60°C/40s	72°C/45s	72°C/10min	35
<i>blaTEM</i>	94°C/5min	94°C/30s	54°C/40s	72°C/45s	72°C/10min	35

native breeds with an incidence of 14.8 and 48.1%, respectively.

E. coli serotyping

Six *E. coli* isolates were investigated for the serotyping of biochemically identified *E. coli*, which revealed that the most predominant serotypes were O27 (16.6%), O18 (16.6%), O158 (33.3%), and O157 (33.3%).

Molecular identification of E. coli Spp. virulence genes

All the serotyped identified *E. coli* isolates were positive in PCR for the following virulence genes with an expected product of 248, 266, 200, 111,300 and 1113bp for *eaeA*, *Iss*, *papC*, *astA*, *iutA*, and *AdrA* with 100% incidence. Shiga toxin genes (*Stx1* and *Stx2*) were not noticed in all screened *E. coli* isolates.

Molecular identification of E. coli Spp. antibiotic resistance genes

All the serotyped identified *E. coli* isolates were positive in PCR for sulphonamide resistance gene (*Sul1*) and beta-lactamase gene (*blaTEM*) with the expected product of 433 and 516bp, respectively.

Phylogenetic tree building

Based on its sequence alignment, the present sequences were firmly embedded within *E. coli* virulence genes. Concerning *ast* gene, the accession numbers (PP236041-PP236046) showed 100% similarity to that from poultry with cellulitis in Brazil (KJ149567) and only 40% similarity with that from calves with diarrhea in Egypt (HM099899) as shown in Fig. 1.

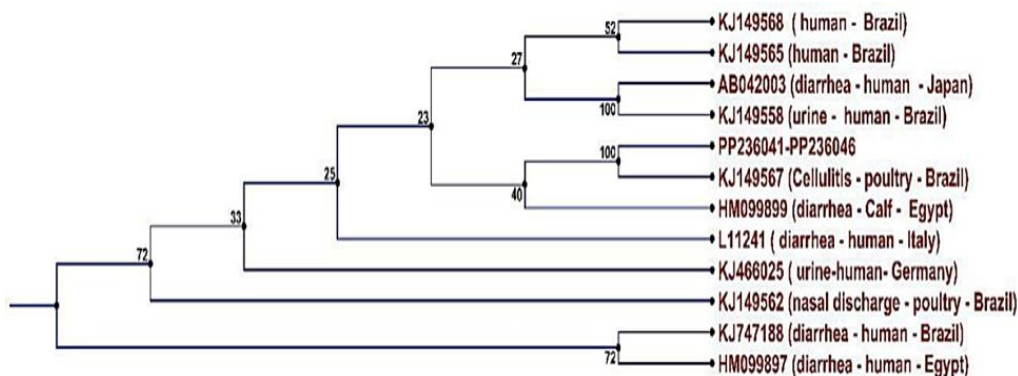


Fig. 1: Phylogenetic tree constructed based on the *ast* gene sequences of *E. coli* (PP236041- PP236046) and its closest sequences using the neighbor-joining method.

Concerning *iss* gene, the accession numbers (PP196348 - PP196353) showed 100% similarity to that from poultry from Brazil (FJ824853), Iran (FJ416147), and USA (AF042279) and China (JX466844) and 97 % similarity with that from poultry in Egypt (KU904254) as shown in Fig. 2. Concerning the *eae* gene, the accession numbers (PP196354-PP196359) showed 100% similarity to that from human stools in India (MF326955), as shown in Fig. 3.

Regarding the *papC* gene, the accession numbers (PP196360- PP196365) showed 100 % similarity to those of patients with urinary tract infections in India (HQ165752 and ON911574) and water in Brazil (OK001333), as shown in Fig. 4.

DISCUSSION

Horses, as companion animals, have been regarded as a possible source of microbial pathogens that trigger infections and problems in a variety of hosts, including humans. regarding these microbes, several strains of *E. coli* exhibit virulence attributes and antibiotic resistance (AMR), which can be spread by direct or indirect contact (Lyimo et al. 2016). One of the commensal microorganisms in horses' gut microbiome is *E. coli*, but it is correspondingly a major opportunistic extra-intestinal bacterium in both adult and young horses (Van Duijkeren

et al. 2000; Albihn et al. 2003; Clark et al. 2008). It is the leading cause of neonatal horse septicemia, and while it isn't usually the reason for gastrointestinal disorders, certain strains might be involved with foal enteric disorders (Magdesian 2005; Olivo et al. 2016).

The Native and Arabian breed of horses showed strangle signs clinically as respiratory distress and nasal discharge and recorded *E. coli* with an incidence of 100% for each (Omair et al. 2018). Kohnen et al. (2023) revealed that of 721 samples cultured for *E. coli* isolated from horses at the hospital, 85% (613/721) were positive. This high incidence matches our study as 68 isolates of *E. coli* were recovered with an incidence of 62.9% (68/108), which isolated from foreign and native breeds with an incidence of 14.8% (16/108) and 48.1% (52/108), respectively. According to several studies, the frequency of resistant *E. coli* in hospitalized horses is expected to be much greater than in non-hospitalized horses (47-73% versus 13–21%) (Bryan et al. 2010; Maddox et al. 2011; Schoster et al. 2012). The O antigen is present in the side chain of the lipopolysaccharide found in cell walls, a crucial *E. coli* component. The current gold standard for epidemiological judgment is the O antigen serotype classification (Liu et al. 2020). We found that *E. coli* isolates showed that the most prevalent serotypes were O27 (16.6%), O18 (16.6%), O158 (33.3%) and O157 (33.3%).

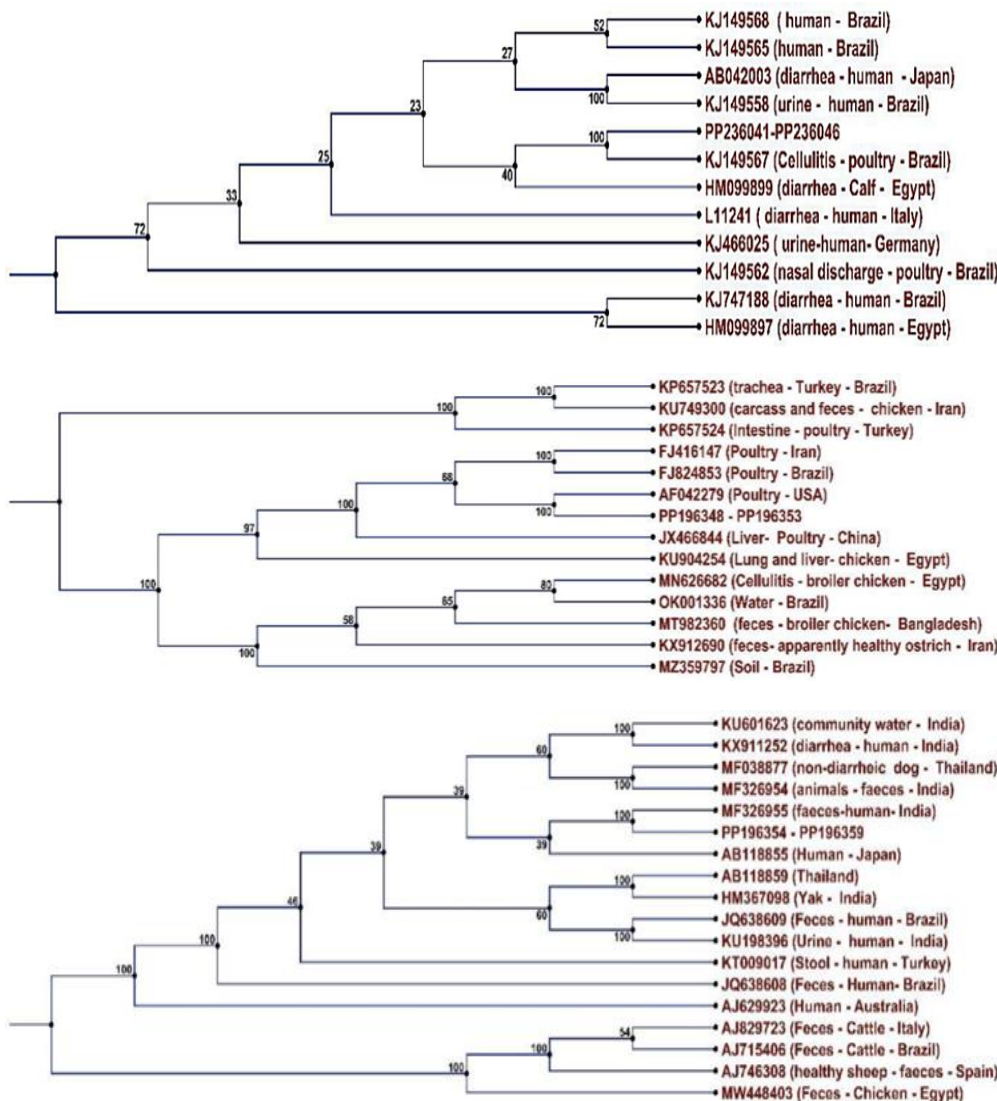


Fig. 1: Using the neighbor-joining method, a phylogenetic tree is constructed based on the *ast* gene sequences of *E. coli* (PP236041-PP236046) and its closest sequences.

Fig. 2: A phylogenetic tree is constructed based on the *iss* gene sequences of *E. coli* (PP196348-PP196353) and its closest sequences using the neighbor-joining method.

Fig. 3: Using the neighbor-joining method, the phylogenetic tree was constructed based on the *eae* gene sequences of *E. coli* (PP196354-PP196359) and its closest sequences.

virulence genes: *eaeA*, *Iss*, *papC*, *astA*, *iutA* and *AdrA* were present in the identified *E. coli* isolates while Shiga toxins (*Stx1* and *Stx2*) were not detected. Therefore, designing treatment methods depending on the diverse local and cyclical factors associated with the incidence and resistant virulent *E. coli* strains is particularly crucial. Sequencing of *ast*, *iss*, *eae*, and *papC* genes showed different similarities to those from poultry, calves, and humans in different countries such as Brazil, Iran, the USA, China, India, and Egypt, which proves the high virulence of this pathogen, which helps it to move from one host to another including human. Our research will help safeguard public and animal health by efficiently treating and controlling *E. coli* infection.

Declaration of competing interest: The authors declare that any known competing financial interests or personal relationships have impacted none of the work described in this study.

Authors' Contribution: AAA, KAA, MMK and AMA shared in the design of this research, AAA conducting the molecular detection of antibiotic resistance genes, supervision, Funding and Project administration. KAA conducting the PCR for sequencing and phylogenetic analysis. MMK was responsible for serological identification and conducting the PCR genetic markers of virulence. AMA was responsible for bacterial isolation, DNA extraction and sharing in conducting the PCR.

Acknowledgement: We are grateful to the National Research Centre in Dokki, Giza, Egypt, for providing Project No. 12020123 with funds and facilities during this study.

REFERENCES

- Albihn A, Båverud V and Magnusson U, 2003. Uterine microbiology and antimicrobial susceptibility in isolated bacteria from mares with fertility problems. *Acta Veterinaria Scandinavica* 44(3-4): 121-129. <https://doi.org/10.1186/1751-0147-44-121>
- Alegbeleye OO, Singleton I and Sant'Ana AS, 2018. Sources and contamination routes of microbial pathogens to fresh produce during field cultivation: a review. *Food Microbiology* 73: 177-208. <https://doi.org/10.1016/j.fm.2018.01.003>
- AVMA, 2021. AAEP prudent drug usage guidelines. American Veterinary Medical Association (<https://www.avma.org/resources-tools/avma-policies/aaep-prudent-drug-usage-g>)
- Arafa AA, Hedia RH, Ata NS and Ibrahim ES, 2021. Vancomycin resistant *Streptococcus equi* subsp. *equi* isolated from equines suffering from respiratory manifestation in Egypt. *Veterinary World* 14(7): 1808-1814. <https://doi.org/10.14202/vetworld.2021.1808-1814>
- Bhowmick PP, Devegowda D, Ruwandeepika HA, Fuchs TM, Srikumar S, Karunasagar I and Karunasagar I, 2011. *gcpA* (*stm1987*) is critical for cellulose production and biofilm formation on polystyrene surface by *Salmonella enterica* serovar *Weltevreden* in both high and low nutrient medium. *Microbial Pathogenesis* 50(2): 114-122. <https://doi.org/10.1016/j.micpath.2010.12.002>
- Bryan J, Leonard N, Fanning S, Katz L and Duggan V, 2010. Antimicrobial resistance in commensal faecal *Escherichia coli* of hospitalised horses. *Irish Veterinary Journal* 63(6): 373-379. <https://doi.org/10.1186/2046-0481-63-6-373>
- Carneiro VC, Lessa DAB, Guttman PM, Magalhaes H, Aquino MHC, Cunha LER, Arais LR and Cerqueira AMF, 2017. Virulence, resistance, and genetic relatedness of *Escherichia coli* and *Klebsiella* sp. isolated from mule foals. *Arquivo Brasileiro de Medicina Veterinaria e Zootecnia* 69: 1073-1082. <https://doi.org/10.1590/1678-4162-9115>
- Clark C, Greenwood S, Boison JO, Chirino-Trejo M and Dowling PM, 2008. Bacterial isolates from equine infections in western Canada (1998-2003). *The Canadian Veterinary Journal* 49(2): 153-160.
- Clermont O, Bonacorsi S and Bingen E, 2000. Rapid and simple determination of the *Escherichia coli* phylogenetic group. *Applied and Environmental Microbiology* 66(10): 4555-4558. <https://doi.org/10.1128/AEM.66.10.4555-4558.2000>
- Colom K, Pérez J, Alonso R, Fernández-Aranguiz A, Lariño E and Cisterna R, 2003. Simple and reliable multiplex PCR assay for detection of blaTEM, bla(SHV) and blaOXA-1 genes in *Enterobacteriaceae*. *FEMS Microbiology Letters* 223(2): 147-151. [https://doi.org/10.1016/S0378-1097\(03\)00306-9](https://doi.org/10.1016/S0378-1097(03)00306-9)
- Coura FM, Diniz Sde A, Silva MX, Mussi JM, Barbosa SM, Lage AP and Heinemann MB, 2015. Phylogenetic group determination of *Escherichia coli* isolated from animals samples. *Scientific World Journal* 258424. <https://doi.org/10.1155/2015/258424>
- Čurová K, Slobodníková R, Kmeťová M, Hrabovský V, Maruniak M, Liptáková E and Siegfried L, 2020. Virulence, phylogenetic background and antimicrobial resistance in *Escherichia coli* associated with extraintestinal infections. *Journal of Infection and Public Health* 13 (10): 1537-1543. <https://doi.org/10.1016/j.jiph.2020.06.032>
- DebRoy C, Roberts E, Jayarao BM and Brooks JW, 2008. Bronchopneumonia associated with extraintestinal pathogenic *Escherichia coli* in a horse. *Journal of Veterinary Diagnostic Investigation* 20(5): 661-664. <https://doi.org/10.1177/104063870802000524>
- Dipinetto L, Santaniello A, Fontanella M, Lagos K, Fioretti A and Menna LF, 2006. Presence of Shiga toxin-producing *Escherichia coli* O157:H7 in living layer hens. *Letters in Applied Microbiology* 43: 293-295. <https://doi.org/10.1111/j.1472-765X.2006.01954.x>
- Duchesne R, Castagnet S, Maillard K, Petry S, Cattoir V, Giard JC and Leon A, 2019. In vitro antimicrobial susceptibility of equine clinical isolates from France, 2006-2016. *Journal of Global Antimicrobial Resistance* 19: 144-153. <https://doi.org/10.1016/j.jgar.2019.03.006>
- Edwards R and Ewing H, 1972. Identification of *Enterobacteriaceae*. Minneapolis, Burgess Publishing Co., PP. 709.
- Lyimo B, Buza J, Subbiah M, Smith W and Call DR, 2016. Comparison of antibiotic resistant *Escherichia coli* obtained from drinking water sources in northern Tanzania: a cross-sectional study. *BMC Microbiology* 16:254. <https://doi.org/10.1186/s12866-016-0870-9>
- Feng P, Weagant DS and Jinneman K, 2011. Food and drug administration. Diarrheagenic *Escherichia coli*. *Bacteriological Analytical Manual Online Chapter 4A* Available: <https://www.fda.gov/food/laboratory-methods-food/bacteriological-analytical-manual-bam>
- Flores-Mireles AL, Walker JN, Caparon M and Hultgren SJ, 2015. Urinary tract infections: epidemiology, mechanisms of infection and treatment options. *Nature reviews: Microbiology* 13(5): 269-284. <https://doi.org/10.1038/nrmicro3432>
- Guion CE, Ochoa TJ, Walker CM, Barletta F and Cleary TG, 2008. Detection of diarrheagenic *Escherichia coli* by use of melting curve analysis and real-time multiplex PCR. *Journal of Clinical Microbiology* 46(5): 1752-1757. <https://doi.org/10.1128/JCM.02341-07>

- Ibekwe AM, Murinda SE and Graves AK, 2011. Genetic Diversity and Antimicrobial Resistance of *Escherichia coli* from Human and Animal Sources Uncovers Multiple Resistances from Human Sources. PLoS ONE 6: e20819. <https://doi.org/10.1371/journal.pone.0020819>
- Knych HK and Magdesian KG, 2021. Equine antimicrobial therapy: current and past issues facing practitioners. Journal of Veterinary Pharmacology and Therapeutics 44(2): 270–279. <https://doi.org/10.1111/jvp.12964>
- Kohnen AB, Wiedenheft AM, Traub-Dargatz JL, Short DM, Cook KL, Lantz K, Morningstar-Shaw B, Lawrence JP, House S, Marshall KL and Rao S, 2023. Antimicrobial susceptibility of Salmonella and *Escherichia coli* from equids sampled in the NAHMS 2015-16 equine study and association of management factors with resistance. Preventive Veterinary Medicine 213: 105857. <https://doi.org/10.1016/j.prevetmed.2023.105857>
- Liu B, Furevi A, Perepelov AV, Guo X, Cao H, Wang Q, Reeves PR, Knirel YA, Wang L and Widmalm G, 2020. Structure and genetics of *Escherichia coli* O antigens. FEMS Microbiology Reviews 44(6): 655-683. <https://doi.org/10.1093/femsre/fuz028>
- Liu Y, McKeever LC, and Malik NS, 2017. Assessment of the Antimicrobial Activity of Olive Leaf Extract Against Foodborne Bacterial Pathogens. Frontiers in Microbiology 8: 113. <https://doi.org/10.3389/fmicb.2017.00113>
- López-Banda DA, Carrillo-Casas EM, Leyva-Leyva M, Orozco-Hoyuela G, Manjarrez-Hernández ÁH, Arroyo-Escalante S, Moncada-Barrón D, Villanueva-Recillas S, Xicohtencatl-Cortés J and Hernández-Castro R, 2014. Identification of virulence factors genes in *Escherichia coli* isolates from women with urinary tract infection in Mexico. BioMed Research International 2014: 959206. <https://doi.org/10.1155/2014/959206>
- Maddox TW, Williams NJ, Clegg PD, O'Donnell AJ, Dawson S and Pinchbeck GL, 2011. Longitudinal study of antimicrobial-resistant commensal *Escherichia coli* in the faeces of horses in an equine hospital. Preventive Veterinary Medicine 100(2): 134-145. <https://doi.org/10.1016/j.prevetmed.2011.02.006>
- Magdesian KG, 2005. Neonatal foal diarrhea. The Veterinary Clinics of North America Equine Practice 21: 295-312. <https://doi.org/10.1016/j.cveq.2005.04.009>
- Melo UP and Ferreira C, 2022. Bacterial pneumonia in horses associated with *Escherichia coli* infection: Report of five cases. Arquivo Brasileiro de Medicina Veterinária e Zootecnia 74: 862-868. <http://dx.doi.org/10.1590/1678-4162-12410>
- Melo UP, Ferreira C and Barreto SWM, 2024. Pulmonary aspergillosis in a horse: a case report. Brazilian Journal of Veterinary Medicine 46: e004723. <https://doi.org/10.29374/2527-2179.bjvm004723>
- Mwafy A, Youssef DY and Mohamed MM, 2023. Antibacterial activity of zinc oxide nanoparticles against some multidrug-resistant strains of *Escherichia coli* and *Staphylococcus aureus*. International Journal of Veterinary Science 12(3): 284-289. <https://doi.org/10.47278/journal.ijvs/2022.181>
- Nocera FP, Maurizi L, Masullo A, Nicoletti M, Conte AL, Brunetti F, De Martino L, Zagaglia C and Longhi C, 2023. Genotypic and Phenotypic Characterization of *Escherichia coli* Isolates Recovered from the Uterus of Mares with Fertility Problems. Animals (Basel) 13(10): 1639. <https://doi.org/10.3390/ani13101639>
- Olivo G, Lucas TM, Borges AS, Silva RO, Lobato FC, Siqueira AK, da Silva Leite D, Brandão PE, Gregori F, de Oliveira-Filho JP, Takai S and Ribeiro MG, 2016. Enteric Pathogens and Coinfections in Foals with and without Diarrhea. BioMed Research International 2016: 1512690. <https://doi.org/10.1155/2016/1512690>
- Omar I, Kamelia O, Samir A and Orabi A, 2018. Bacterial pathogens profile associated with respiratory manifestations in equine. Journal of Egyptian Veterinary Medicine Association 78: 419-425.
- Pakbin B, Brück WM and Rossen JWA, 2021. Virulence Factors of Enteric Pathogenic *Escherichia coli*: A Review. International Journal of Molecular Sciences 22(18):9922. <https://doi.org/10.3390/ijms22189922>
- Raidal SL, 2019. Antimicrobial stewardship in equine practice. Australian Veterinary Journal 97: 238–242. <https://doi.org/10.1111/avj.12833>
- Ramos S, Silva V, Dapkevicius MLE, Caniça M, Tejedor-Junco MT, Igrejas G and Poeta P, 2020. *Escherichia coli* as Commensal and Pathogenic Bacteria Among Food-Producing Animals: Health Implications of Extended Spectrum β -lactamase (ESBL) Production. Animals (Basel) 10: 2239. <https://doi.org/10.3390/ani10122239>
- Recchia GD and Hall RM, 1995. Gene cassettes: a new class of mobile element. Microbiology 141: 3015–3027. <http://dx.doi.org/10.1099/13500872-141-12-3015>
- Reshadi P, Heydari F, Ghanbarpour R, Bagheri M, Jajarmi M, Amiri M, Alizade H, Badouei MA, Sahraei S and Adib N, 2021. Molecular characterization and antimicrobial resistance of potentially human-pathogenic *Escherichia coli* strains isolated from riding horses. BMC Veterinary Research 17(1): 131. <https://doi.org/10.1186/s12917-021-02832-x>
- Reuss SM and Giguère S, 2015. Update on bacterial pneumonia and pleuropneumonia in the adult horse. The Veterinary Clinics of North America. Equine Practice 31: 105-120. <https://doi.org/10.1016/j.cveq.2014.11.002>
- Riaz A, Shahzad MA, Ahsan A, Aslam R, Usman M, Rasheed B, Hussain M, Irtash M, Saleemi MK, Ali A, Sajid SM and Irshad H, 2023. Investigations into the role of zoo animals in transmitting the extended spectrum beta lactamases (ESBL) *E. coli* in the environment. International Journal of Veterinary Science 12(6): 832-837. <https://doi.org/10.47278/journal.ijvs/2023.046>
- Rousham EK, Unicomb L and Islam MA, 2018. Human, animal and environmental contributors to antibiotic resistance in low-resource settings: integrating behavioural, epidemiological and One Health approaches. Proceedings of Biological Sciences 285(1876): 20180332. <https://doi.org/10.1098/rspb.2018.0332>
- Salinas L, Loayza F, Cárdenas P, Saraiva C, Johnson TJ, Amato H, Graham JP and Trueba G, 2021. Environmental Spread of Extended Spectrum Beta-Lactamase (ESBL) Producing *Escherichia coli* and ESBL Genes among Children and Domestic Animals in Ecuador. Environmental Health Perspectives 129(2): 27007. <https://doi.org/10.1289/EHP7729>
- Schoster A, Staempfli HR, Arroyo LG, Reid-Smith RJ, Janecko N, Shewen PE and Weese JS, 2012. Longitudinal study of *Clostridium difficile* and antimicrobial susceptibility of *Escherichia coli* in healthy horses in a community setting. Veterinary Microbiology 159:364-370. <https://doi.org/10.1016/j.vetmic.2012.04.006>
- Stucchi L, Lo Feudo CM and Ferrucci F, 2023. Equine Respiratory Medicine and Cardiology. Animals 13: 2952. <https://doi.org/10.3390/ani13182952>
- Tawfik RG, Khalil SA, Ellakany HF and Torky HA, 2016. *Mycoplasma Synoviae* and other Associated Bacteria Causing Arthritis in Chicken. Alexandria Journal of Veterinary Sciences 49 (2): 163-169. <https://doi.org/10.5455/ajvs.205876>
- Traub-Dargatz JL and Dargatz DA, 2009. Antibacterial drug resistance and equine practice. Equine Veterinary Education 21 (1): 49-56. <https://doi.org/10.2746/095777309X382622>
- Van Duijkeren E, van Asten AJ and Gastra W, 2000. Characterization of *Escherichia coli* isolated from adult horses with and without enteritis. The Veterinary Quarterly

- 22: 162-166. <https://doi.org/10.1080/01652176.2000.9695048>
- Weese JS, 2015. Antimicrobial use and antimicrobial resistance in horses. *Equine Veterinary Journal* 47(6): 747-749. <https://doi.org/10.1111/evj.12469>
- Weese JS, Giguère S, Guardabassi L, Morley PS, Papich M, Ricciuto DR and Sykes JE, 2015. ACVIM consensus statement on therapeutic antimicrobial use in animals and antimicrobial resistance. *Journal of Veterinary Internal Medicine* 29: 487-498. <https://doi.org/10.1111/jvim.12562>
- Wu HJ, Wang AH and Jennings MP, 2008. Discovery of virulence factors of pathogenic bacteria. *Current Opinion in Chemical Biology* 12: 93-101. <https://doi.org/10.1016/j.cbpa.2008.01.023>
- Yaguchi K, Ogitani T, Osawa R, Kawano M, Kokumai N, Kaneshige T, Noro T, Masubuchi K and Shimizu Y, 2007. Virulence factors of avian pathogenic *Escherichia coli* strains isolated from chickens with colisepticemia in Japan. *Avian Diseases* 51: 656-662. [https://doi.org/10.1637/0005-2086\(2007\)51\[656:VFOAPE\]2.0.CO;2](https://doi.org/10.1637/0005-2086(2007)51[656:VFOAPE]2.0.CO;2)
- Yamamoto T and Echeverria P, 1996. Detection of the enteroaggregative *Escherichia coli* heat-stable enterotoxin 1 gene sequences in enterotoxigenic *E. coli* strains pathogenic for humans. *Infection and Immunity* 64: 1441-1445. <https://doi.org/10.1128/iai.64.4.1441-1445.1996>
- Yılmaz EŞ and Aslantaş Ö, 2020. Phylogenetic group/subgroups distributions, virulence factors, and antimicrobial susceptibility of *Escherichia coli* strains from urinary tract infections in Hatay. *Revista da Sociedade Brasileira de Medicina Tropical* 53: e20190429. <https://doi.org/10.1590/0037-8682-0429-2019>